

nuSub XW-700 / XW-900



Device approval and conformity with EC directives

Nubert electronic GmbH hereby declares that this product complies with the 2014/53/EU directives, provided that it is installed and used in accordance with the manufacturer's instructions. The full text of the EU Declaration of Conformity is available at the following Internet address:

<https://www.nubert.de/konformitaetserklaerungen/716/>

- Do not change the serial number on the speaker. It is part of the operating approval.
- If the loudspeaker is repaired or modified by workshops or other third parties not authorized by Nubert, it loses its operating license.
- Only accessories and devices may be connected which in turn comply with all legal requirements and are approved.
- The loudspeaker may only be used for the applications specified in the „Intended Use“ section

Intended use

This speaker is designed exclusively for sound reproduction in dry rooms. Use the speaker only as described in this manual. Any other use (particularly safety-relevant or medical use, installation in open environment like IP-certified products) is considered improper and may result in property damage or even personal injury. Nubert electronic GmbH does not assume any liability for damages caused by improper use.

Safety instructions

The entire operating manual, in particular the safety instructions, must be read in full before connecting and commissioning the device. For your own safety, be sure to follow all warnings and safety instructions in this manual and on the speaker. The user is not permitted to carry out any work on the loudspeaker other than the described work. Keep this document so that you have access to it at all times. Furthermore, it must also be handed over to possible re-owners.

Active subwoofer

Safety instructions

Technical data

Warranty terms

Key to the symbols

The triangle symbol with exclamation mark (without additional comment) indicates important instructions for commissioning, operation and maintenance of the device.

The term **Caution!** next to the triangle symbol indicates a medium risk. Failure to observe this warning may result in property damage.

The term **Danger!** next to the triangle symbol indicates a high risk. Failure to observe this warning may result in death or personal injury

This symbol indicates that you must read and observe the operating instructions and the safety and warning notices in order to operate the device.

This symbol (triangle with lightning) warns of dangerous voltages inside the enclosure and of hazards due to electric shock.

This symbol indicates that the device complies with electrical protection class 2 and therefore does not require earthing.

Devices with this symbol may only be used in a dry indoor environment.

Equipment marked with this symbol must not be disposed of with household waste. Refer to the Disposal and Battery Return section at the end of this manual.

General information

Never operate the loudspeaker unattended!

Danger of electric shock!

To avoid the risk of electric shock, the speaker may not be opened by the user. There are no user-serviceable parts inside the speaker.

Service work and repairs are reserved for qualified specialists authorized by Nubert. If you need service, please contact Nubert electronic GmbH directly (info@nubert.de)!

Danger of suffocation!

Never let children use or play with neither speaker, remote control or packaging unattended. There is a risk that children will get caught in the packaging film and suffocate. Make sure that children cannot remove any small parts from the devices! These parts, like the remote control battery, could be swallowed and cause suffocation. In case of swallowing any parts, contact a doctor immediately!



Danger of injury or damage!

When moving the speaker, take care to avoid injury and damage!



Caution!

Since the speaker can only be completely disconnected from the mains at the mains input on the rear of the unit or by pulling the mains plug from the socket, it must be positioned so that you have free access to the mains input or mains plug. If any of the following situations occurs, the loudspeaker must be switched off immediately and disconnected from the mains. Contact Nubert electronic GmbH (info@nubert.de) immediately!

- The speaker has been damaged or has fallen down.
- Power cord or plug is damaged
- Objects or liquid have got into the loudspeaker
- The speaker has been exposed to excessive moisture or rain.
- The speaker does not work properly or exhibits a significant reduction in performance.
- The loudspeaker smells burnt, develops smoke or makes unusual noises.



Caution!

The driver in this loudspeaker produces a strong magnetic field in its immediate vicinity that can affect or damage other equipment close by. It is therefore imperative that you keep magnetically sensitive devices and items away from the loudspeaker. Never place CRT screens, notebooks, hard drives or similar on the loudspeakers!



Only use accessories recommended by Nubert!

Installation instructions



Caution!

An unstable location can damage the speaker.

- Only place the loudspeaker on a flat, stable surface and make sure that it cannot be knocked over!
- Also make sure that no unintentional pulling can occur on the cables to avoid knocking over the speaker or damaging the connection sockets!
- Keep strong mechanical shocks away from the loudspeaker!



Caution!

Excessive heat build-up inside the unit can shorten its service life or lead to fire.

- Never cover the back of the speaker! Make sure that there is a clearance of at least 10 cm and sufficient air circulation in the back area!
- Do not operate the speaker and remote control near heat sources such as radiators or stoves!
- Do not set the speaker and remote control to direct sunlight.
- Do not expose to direct sunlight!
- Never place burning candles or similar open fire sources on the loudspeaker!



Danger of explosion!

Installation in unsuitable locations can cause explosions. Do not use the speaker or remote control

- in environments where there is a risk of fire or explosion!
- at extremely low or extremely high temperatures!
- near flammable gases or vapours!
- near strong dust!
- near flammable materials!



Danger of electric shock!

The loudspeaker carries mains voltage and voltages higher than 35 V AC or DC inside. It has no special protection against the intrusion of liquids or objects into the system. There is therefore a risk of lethal electric shock.

- Never touch the speaker with wet hands!
- Only use the speaker in a dry place!
- Do not operate it outdoors or in damp rooms!
- The loudspeaker must be protected from liquids of all kinds, including dripping and splashing water.
- Do not place any containers containing liquids (e.g. flower vases) on the speaker or in the immediate vicinity!
- If the loudspeaker is moved from a cold environment to a warm room, condensation may form inside the unit. Wait at least six hours until the loudspeaker has reached room temperature and is dry before switching it on!
- No objects or foreign bodies may get into the device.
- Should the loudspeaker come into contact with liquids or should objects have got inside, please unplug the mains plug immediately and contact Nubert electronic GmbH (info@nubert.de)!



Danger of injury or damage!

For speakers with threaded bushings on the underside:

The threaded bushings may be used for upright mounting of the loudspeaker on suitable base plates only. The threaded bushings on the underside of the loudspeaker enclosures are not designed for tensile loads and must therefore not be used as holders for hooks or similar devices in order to suspend the loudspeaker cabinet. A falling speaker may cause serious injury and damage.

Connection instructions



General connection instructions

- Disconnect the mains plug before changing any wiring on the system!
- Make sure that all connections have been made correctly and that all plugs are firmly seated in the sockets before connecting the speaker to the mains.
- Use only the intended cables or plug connections for the connections! Failure to do so may result in damage or malfunction.
- If you want to disconnect connections on the loudspeaker, always pull the plug, never the cable!
- Ensure that all plugs are firmly seated in the sockets!
- Only use cables and accessories recommended by Nubert!

Danger of electric shock!

Faulty mains supply systems or excessive mains voltage can lead to electric shocks.

- All power supply or antenna systems connected to the loudspeaker must comply with all applicable laws and regulations and be professionally installed by an approved installation company.
- Use only the appropriate power cord to connect the speaker. Do not modify the power cord or its plug.
- Make sure that the mains voltage at your location matches the requirements of the loudspeaker! The correct power supply can be found on the label on the back of the speaker. It must not be connected to other power supplies.
- Devices of Class 1 construction must be connected to the mains power socket outlet with a protective earth connection. Make sure that the installation of the protective earth is carried out correctly!
- When laying the power cables, make sure that they cannot be damaged (e.g. by heating or mechanical stress)! Pay particular attention to the areas of the connectors and distributors!



Caution!

Overvoltage in the power supply system (e.g. due to lightning) can damage or destroy the device and power supply unit.

- An overvoltage protection element can provide a certain degree of protection against excessively high voltages in the power grid.
- However, the greatest possible protection against damage can only be achieved with the complete separation from the mains supply. In case of thunderstorms or danger of lightning strikes, disconnect the mains cable from the socket and any antenna plugs from your hi-fi system!
- If the speaker is not used for a long period of time or is unattended, the power supply should be disconnected. Disconnect the mains plug from the socket!

Unpacking and Scope of Delivery

Unpacking

When unpacking your speaker, do not use sharp or pointed objects to avoid possible damage to the enclosure. Please keep the packaging in a safe place in case you need to transport the speaker at a later date.

Scope of delivery

If the delivery is complete, it contains the following parts:

- 1 Subwoofer
- 1 Mains cable, 3 m
- 1 Y-subwoofer cable, mono cinch plug to 2x cinch plug, 3 m

Auto-off

The subwoofer has an automatic power off function. If the LINE IN input is selected, the subwoofer switches to standby mode after no more than 20 minutes without a signal. For this input the automatic switch-off can be deactivated via app. The stand-by power consumption is 0.5 watts.

If WIRELESS IN is selected as the input, the subwoofer follows the wireless transmitter that acts as the master. This function cannot be deactivated. The standby power consumption is 0.6 watts.

Auto-on

The subwoofer has an auto-on function that can automatically wake the subwoofer up from standby mode when a signal is sensed. This function is only active if the subwoofer was set to standby by the auto-off function. To wake up the subwoofer, a signal must be present at the input that was selected when the loudspeaker went into standby. If the subwoofer was set to standby using the on/off button in the app, the auto-on function is disabled.

Care and cleaning tips



Caution!

Improper handling of the speaker may result in damage.

- Always unplug the speaker before cleaning it!
- Before recommissioning, make sure that all connections are correct, that there are no short circuits and that the speaker is completely dry.
- Never use strong cleaning agents or solvents such as petrol, spirit or similar!

Enclosure

We recommend commercial window cleaner sprayed onto a cotton cloth. This allows almost all fingerprints and dust to be easily removed. Alternatively, you can also use window active foam.

We advise against the use of microfibre cloths! These can cause mini scratches in the surface.

Diaphragms and Speaker Chassis

To remove dust from a loudspeaker chassis, a lint-free cotton cloth is sufficient to wipe the membrane lightly with very little pressure.

Service

If you have any questions or problems during the commissioning of your Nubert system, please do not hesitate to contact our service team:

Phone: +49 7171 8712-0

E-mail: info@nubert.de

Please have your customer number ready!

| Technical Data | XW-700 | XW-900 |
|--|---|---|
| Principle | Active Bass Reflex Subwoofer | Active Bass Reflex Subwoofer |
| Subwoofer chassis | 1x 204 mm bass driver | 1x 267 mm bass driver |
| Power of built-in amplifiers | 1x 180 Watt (rated power) 1x 250 Watt (music power) | 1x 220 Watt (rated power) 1x 380 Watt (music power) |
| Frequency response | 26 – 120 Hz (-3 dB) | 21 – 120 Hz (-3 dB) |
| Input sensitivity | 0.3 Veff | 0.3 Veff |
| Max. Input | 4.5 Veff | 4.5 Veff |
| Standby power consumption (varies depending on selected source) | 0.5 Watt (Source: Line In) 0.6 Watt (Source: Wireless) | 0.5 Watt (Source: Line In) 0.6 Watt (Source: Wireless) |
| Radio frequency bands | radio transmitting power | radio transmitting power |
| Bluetooth module 2402 – 2480 MHz | 9.75 dBm / 9.5 mW | 9.75 dBm / 9.5 mW |
| Network module 5180 – 5240 MHz | 15.75 dBm / 37.6 mW | 15.75 dBm / 37.6 mW |
| 5736 – 5818 MHz | 15.75 dBm / 37.6 mW | 15.75 dBm / 37.6 mW |
| Hight | 42.9 cm (incl. feet) | 47.7 cm (incl. feet) |
| Width | 30 cm | 35 cm |
| Depth | 34 cm | 40 cm |
| Weight | 12.5 kg | 19.5 kg |
| Ambient temperature | 5° C – 35° C | 5° C – 35° C |

Warranty terms

Your provider and contractual partner:

Nubert electronic GmbH, Goethestr. 69, 73525 Schwäbisch Gmünd, Germany
Phone: +49 7171 8712-0 · Fax: +49 7171 8712-345 · E-Mail: info@nubert.de

For questions and individual advice, please dial our special number:
+49 7171 8712-0

Managing Directors: Günther Nubert, Bernd Jung · Register court AG Ulm, HRB 700296
Tax ID No.: DE 16758584 · WEEE Reg. No. DE 48888173

Our hotline is available from:
Monday to Friday from 10:00-18:00 and Saturdays from 9:00-13:00.

Nubert warrants the Nubert product described in this manual to the purchaser under the following terms and conditions.

The purchaser's statutory warranty claims, in particular for subsequent performance and, if applicable, damages in the event of defects, shall remain unrestrictedly with the purchaser and shall be fully available to our customers.

1. The warranty period for the Nubert product and its electronic components described in this manual is 2 years from the date of delivery.

Your proof of purchase is the proof of guarantee.

2. Contents of the warranty claim

The guarantee applies to all parts and labour costs from delivery. It includes and is limited to the free repair or replacement of the defective part in the event of a material defect in the goods (e.g. Material defect or manufacturing defect). In addition, Nubert shall bear the costs of the return shipment of the affected product from or to the curb in the case of justified warranty claims, provided that the goods are within the countries of the European Union and the shipment was previously agreed with Nubert. Additional services are possible as a gesture of goodwill in accordance with Nubert's free discretion. For the duration of the guarantee, it is assumed that the material defect was already present at the time of transfer of risk. Replaced parts become the property of Nubert. Warranty services do not extend the warranty period, nor do they set a new warranty period in motion. The warranty period for installed spare parts ends with the warranty period for the entire device. The promise or the execution of warranty services is made without recognition of a performance obligation according to statutory warranty law.

3. The warranty claim does not apply in the case of

- repair attempts of any kind not previously agreed upon with Nubert
- improper operating environment or improper storage (e.g. damage due to moisture or particularly high or low temperatures)
- improper transport packaging (the original transport packaging, correctly used, provides sufficient protection)
- improper transport, if the transport was not previously agreed upon with Nubert (Nubert organizes the transport for you with Nubert selected Transport company. You will receive return tickets with the corresponding postage paid returns).
- improper mechanical effects on the goods (e.g. on housing, switches, connection sockets or antennas)
- improper operation, improper mounting (e.g. switches, antennas) or improper connection (e.g. operation on defective or unsuitable amplifiers or other source devices with DC voltage or unusually high hum voltage at the source device output).

4. Disassembled components

Do not disassemble any components from our equipment and do not send in any such individual parts until you have contacted Nubert Service and agreed on this measure.

5. What to do in the event of a warranty claim

If possible, pack the defective device in its original carton with a copy of the purchase receipt and a meaningful description of the defect. Please note our shipping instructions. Please contact the Nubert team for a return or refund:

• Telephone: +49 7171 8712-0 • Fax: +49 7171 8712-345 • E-mail: info@nubert.de

Of course, you can also return your defective product to the Nubert Service in Schwäbisch Gmünd:
Nubert electronic GmbH, Goethestr. 69, D-73525 Schwäbisch Gmünd, Germany.

Shipping information: We recommend that you always keep the original carton, along with the protective foam inserts. Tip: Folding saves space! This is the only way to ensure a safe return shipment in the worst-case scenario. If, in exceptional cases, you use a different packaging, it should protect professionally against the typical dangers of shipping and have special protective cushions or equivalent protective devices. We would like to draw your attention to the fact that we accept no liability for damage caused by improper packaging for which you are responsible!

Disposal

Environmental protection: Ingredients, e.g. chemical pollutants in old appliances, can damage the environment and health if stored improperly, in particular if they are not shatterproof or disposed of properly by persons not authorised to do so. Especially in the case of illegal exports, there is no guarantee that the environment and human health will be protected from damage. Old appliances can also contain recyclable raw materials, old appliances can be repaired or parts can be reused and thus considerably protect the environment. Old appliances must therefore not be disposed of with normal household waste or exported illegally. As an end user, you are legally obliged to return or properly dispose of electrical equipment. Please note: You are responsible for the deletion of personal data on the waste equipment to be disposed of.

Old appliances

Electrical and electronic equipment is also marked with the crossed-out wheellie bin symbol.

The symbol indicates that you, as the owner of this appliance, may not dispose of it with your household waste (grey bin, yellow bin, organic waste bin, paper or glass).

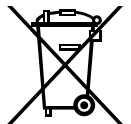
You can send the device to the municipal collection points to be collected separately from unsorted municipal waste for reuse.

Old appliances can also be returned to us directly in our shops or shipped back to us for disposal. Please send an Email to info@nubert.de for a free return shipping label. You can also request this by calling +49 7171-8712-0. Please then send the old device to the following address:

Nubert electronic GmbH, Goethestr. 69, D-73525 Schwäbisch Gmünd, Germany.

Please ensure that the old appliance is properly packaged for shipment so that breakage is avoided as far as possible and mechanical compaction or breakage can be ruled out.

The acceptance of waste equipment may be refused if there is a risk to human health and safety due to contamination



As of: 26.7.2019

Technical changes, errors and misprints excepted - You will find our General Terms and Conditions (AGB) on our website: www.nubert.de/agb.htm

nuSub XW-700 / XW-900

Active Subwoofer

Quick Start Guide Instruction manual



nubert®

1. Placement

First, place the subwoofer at the intended location.
In the following, we will give you a few helpful hints:

Placement and Sound

When you place one or more subwoofers in a room you have different options, depending on what you want to achieve.

- We generally recommend a placement that ensures precise bass reproduction. This is particularly important when listening to music and is normally achieved by placing the woofer some distance away from the walls.
To prevent rumbling and exciting room modes the subwoofer should be placed, for example, at one fifth of the length and width of the room or a multiple thereof. The graphics to the right shows this in a 6 x 4 metre room.
- For home cinema effects, placements that would be disadvantageous for music reproduction can sound the most impressive. For this purpose, a placement closer to wall or in a corner can be perceived as good, even if the result is less accurate.

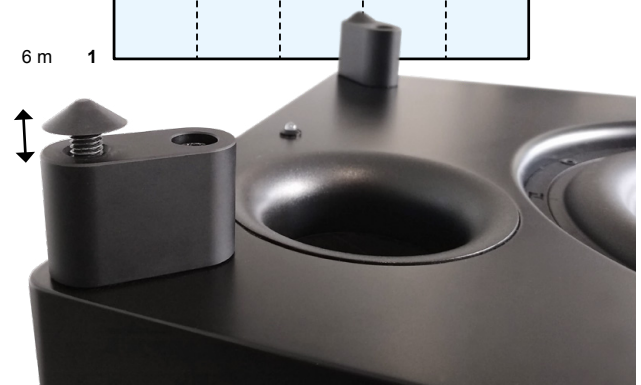
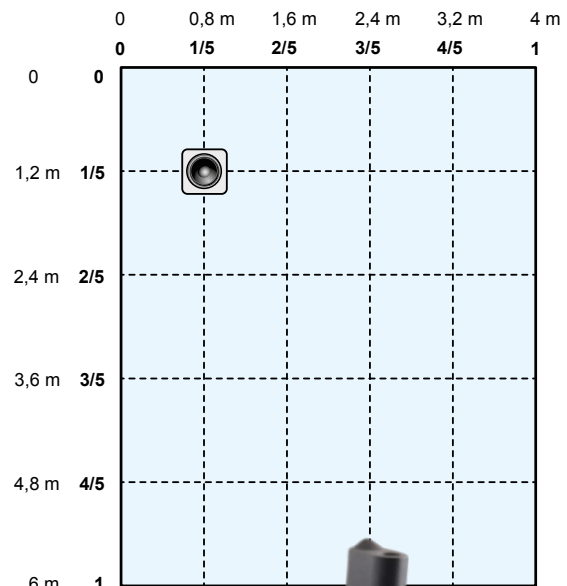
Height-adjustable feet

The subwoofer has aluminium feet with vibration-absorbing rubber mini-spikes that can be adjusted for a level, stable stand. By adjusting the mini-spikes you can compensate for surface irregularities (see picture)

The feet also ensures that the down-firing bass driver have the required distance to the floor.

Note:

The subwoofer cannot be used without the feet being mounted!



2. Cable connections

Always connect all cables before turning on the subwoofer!

LINE-connection

If you want to use a wired connection, connect a phono cable between the source and the subwoofer.
If you want to connect the subwoofer wirelessly, you can skip this step.

LINE IN

L_in



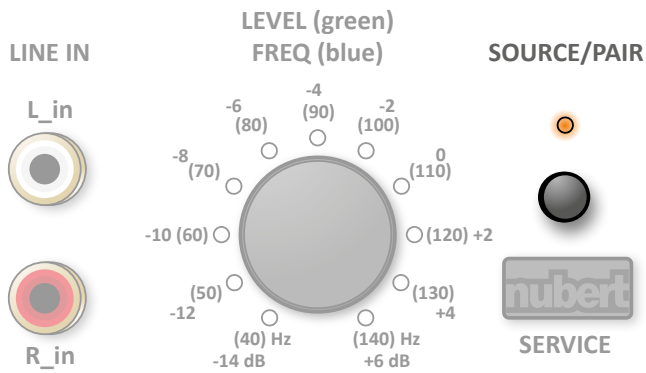
R_in

Power connection

The supplied power cable is connected to subwoofer on the backside in order to provide connection to the power grid.

Turn on the subwoofer by switching the power-switch to the ON position. If necessary, the subwoofer can be switched on by pressing one of the two buttons on the amplifier module.





3. Wireless connection

Press and hold the SOURCE/PAIR button for 3 seconds to start the pairing-process.

The Subwoofer will begin searching for a compatible wireless Master (e.g. nuPro X loudspeakers or nuConnect ampX). The Subwoofer will search for two minutes; the search is indicated by the white LED flashing rapidly.

You can now start the pairing procedure on the transmitter. This is normally done by selecting wls master in the setup menu. Please refer to the user's manual of your Master-appliance.

The two devices now connect to each other. When the connection is established, the white LED will light permanently.

Note: When connected wirelessly, the subwoofer receives an unfiltered, full-range signal and the crossover frequency must be set on the subwoofer.

4. Source Selection

Briefly pressing the SOURCE/PAIR button changes between the two sources

LINE IN:

- LED lights orange: factory default setting
- Standby power consumption: 0,5 Watts
- Automatic switch-off:
If LINE IN is selected as the input, the subwoofer switches to standby mode after no more than 20 minutes without a signal. For this input, the automatic switch-off can be deactivated via app.
- Automatic switch-on:
If the stand-by state was initiated by the automatic switch-off, the subwoofer is automatically switched on again when an audio signal is detected at the LINE IN input.
If the stand-by mode was initiated manually by pressing the on/off button in the app, the automatic switch-on function is deactivated.

WIRELESS IN:

- LED lights white: Connection established
- LED flashes slowly: No connection to Master
- LED flashes rapidly: Pairing mode active
- Standby power consumption: 0,6 Watts
- Automatic stand-by:
If WIRELESS IN is selected as the input, the subwoofer will directly follow the wireless transmitter which acts as the master. This function cannot be deactivated.



5. Settings

You can set the crossover frequency and relative level of the subwoofer with the rotary encoder on the backside of the subwoofer. Settings are made and saved for each source.

Push

Press the encoder briefly to toggle between LEVEL and FREQ:

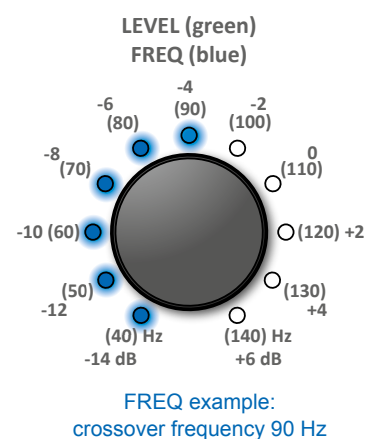
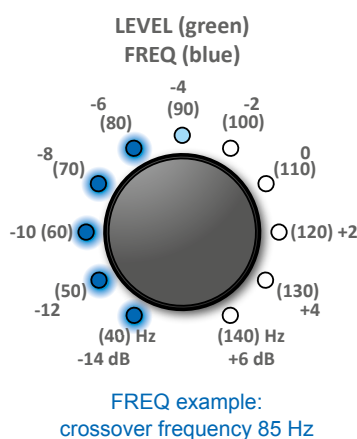
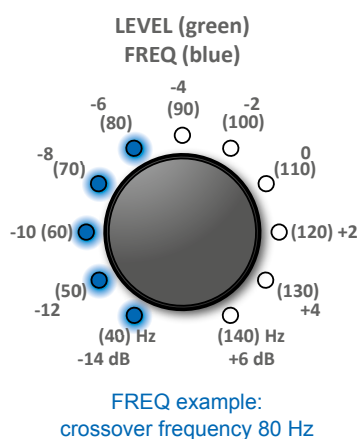
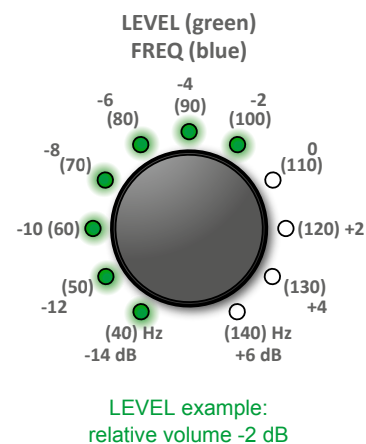
- **LEVEL** The LED lights green
- **FREQ** The LED lights blue

Turn

By turning the encoder, you adjust the selected parameter:

- **LEVEL** -15 dB to +6 dB, 1 dB steps
- **FREQ** 35 to 140 Hz, 5 Hz steps

The set value is shown by the LED ring. The last LED has two different brightness levels that allow the precise read-out of the set value. If the last LED lights with full brightness, the set value is the exact value of the markings next to the encoder. If the LED lights with reduced brightness, the set value is the lower intermediate value not shown by the markings.



6. Application Examples

Example 1: Wirelessly connecting a nuSub XW-700 to a pair of nuPro X-3000 loudspeakers

When connected wirelessly, the subwoofer receives an unfiltered, full-range signal and the crossover frequency must be set on the subwoofer.

- **System HP** in the loudspeaker-menu sets the High-pass crossover frequency of the loudspeaker, e.g. 80 Hz.
- **FREQ** setting on the subwoofer: sets the low-pass crossover frequency for the subwoofer, e.g. 80 Hz.
- **LEVEL** setting on the subwoofer: sets the relative level of the subwoofer, e.g. -8 dB.

Example 2: Wired connection between a nuSub XW-700 (LINE IN) and a pair of nuBox A-125's (or an AS-225)

The loudspeaker automatically applies an 80 Hz high-pass filter as soon as a cable is connected to the SUB OUT phono connector. The appropriate crossover frequency of the subwoofer is set on the subwoofer itself.

- **FREQ** setting on the subwoofer: sets the low-pass crossover frequency for the subwoofer, e.g. 80 Hz.
- **LEVEL** setting on the subwoofer: sets the relative level of the subwoofer, e.g. -4 dB.

Example 3: Wired connection between a nuSub XW-900 and an AV-receiver (LINE IN)

The crossover frequency and relative level settings can be set on the AV-receiver or automatically by the room-calibration of the AV-receiver. On the subwoofer itself, the crossover should be set to the maximum value. The relative level (LEVEL) on the other hand, should be set as low as possible in order to the AV-receiver the supply the subwoofer with a strong signal. This is necessary in order to allow the auto on-/off function to work reliably. If both X-Room Calibration and the receiver's calibration system are to be used, it is recommended to run the X-Room Calibration first.

- **FREQ** setting on the subwoofer: sets the low-pass crossover frequency for the subwoofer, e.g. 140 Hz.
- **LEVEL** setting on the subwoofer: sets the relative level of the subwoofer, e.g. -12 dB.



7. Using the Nubert X-Remote App

You can also use the Nubert X-Remote App to set up and adjust the subwoofer. The app is available for free at the Google Play Store or at the Apple App Store. The app offers more settings and a graphical user interface and is recommended for everyone that would like to make detailed adjustments and have access to more parameters than available on the subwoofer itself.

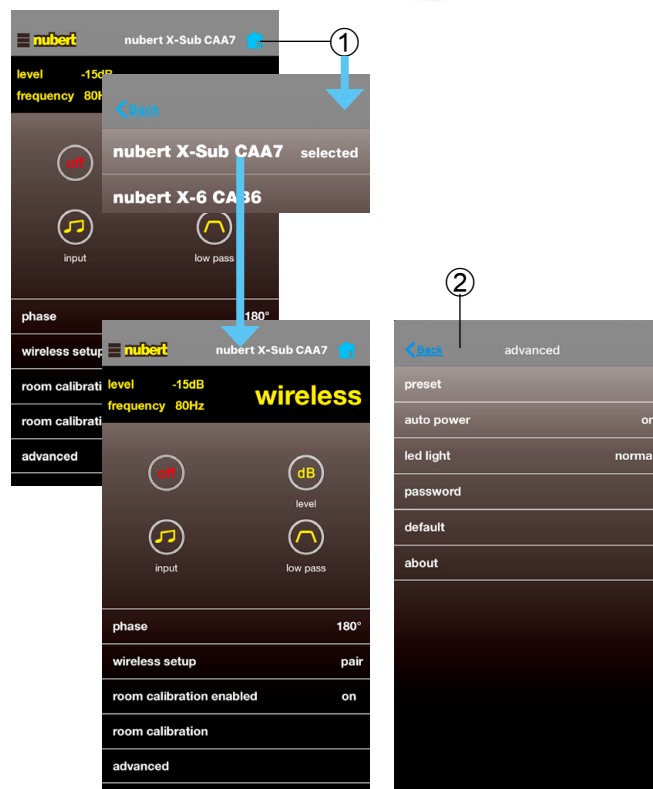
Connecting the X-Remote App with the subwoofer

Download the app from the Google Play Store or the Apple App Store and install it. On Android devices, you must allow the app to access to the device's location.

The app communicates with subwoofer via Bluetooth LE. Use the app to connect to the subwoofer! Do not connect to the subwoofer using the settings of your device!

① After opening the app, you are prompted to connect to a device. Tap **connect** to see a list of available devices. You can also tap the home symbol in the upper right corner to get to the device list. Select a device. **Selected** appears in the display next to the selected device as confirmation. You will be prompted to enter a password. The default password is 0000.

② On the initial screen, you have direct access to all basic functions such as input selection and level. By tapping "advanced", you access the submenu for further settings. Here you can, for example, configure the behavior of the status LED.



Screenshots: App V1.3

8. Factory Reset

To reset the subwoofer to the factory settings, it must first be switched off at the power switch on the back of the unit.

Wait 10 seconds and switch it on again.

Within 7 seconds after switching it on, both buttons on the back of the device (SOURCE/PAIR and the rotary encoder) must be pressed and held for 3 seconds.

The subwoofer confirms the input by flashing the SOURCE/PAIR LED. All settings are now restored to the default state.

