

QUICK START GUIDE



You can find the most recent version of the operating manual here: www.nubert.de/downloads/61/

E12

1 Cable connections

Please connect all sources and the optional sub-woofer to one of the two speakers of the stereo pair.

Analogue XLR connection: Here, as an exception, each loudspeaker is supplied with the corresponding signal separately.

At the digital Port input, you can plug in the supplied HDMI/ARC adapter, enabling the direct connection of a TV.



Each nuPro loudspeaker is connected to the power grid using the supplied power-cable.

Press the power switch on the back to turn on the speaker! If necessary, press the power-button on the remote control to "wake up" the speaker.



2 Master-slave connection

The speaker you connected your sources to must be set as the Master speaker.

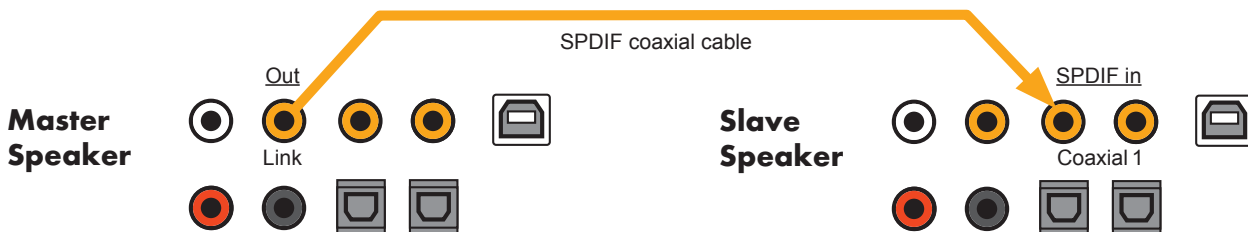
The master speaker controls and passes the correct audio signal on to the second (slave-)speaker.

In order to achieve this, the speakers must be connected to each other. The connection can be either wired or wireless. After the connection has been made, you won't need to make any changes to the settings on the slave-speaker.

Option A – wired connection

Connect the included coaxial cable between the orange coloured *Link Out* connector on the Master speaker and the *SPDIF in* Coaxial 1 connector on the Slave speaker.

The slave speaker configures itself automatically.



Option B – wireless connection

If a wired connection between the two speakers isn't possible or wanted, you have the option to connect the two speakers wirelessly.

Each speaker must be individually set as Master or Slave in the setup-menu of each loudspeaker. This is done using the control pad next to the display.

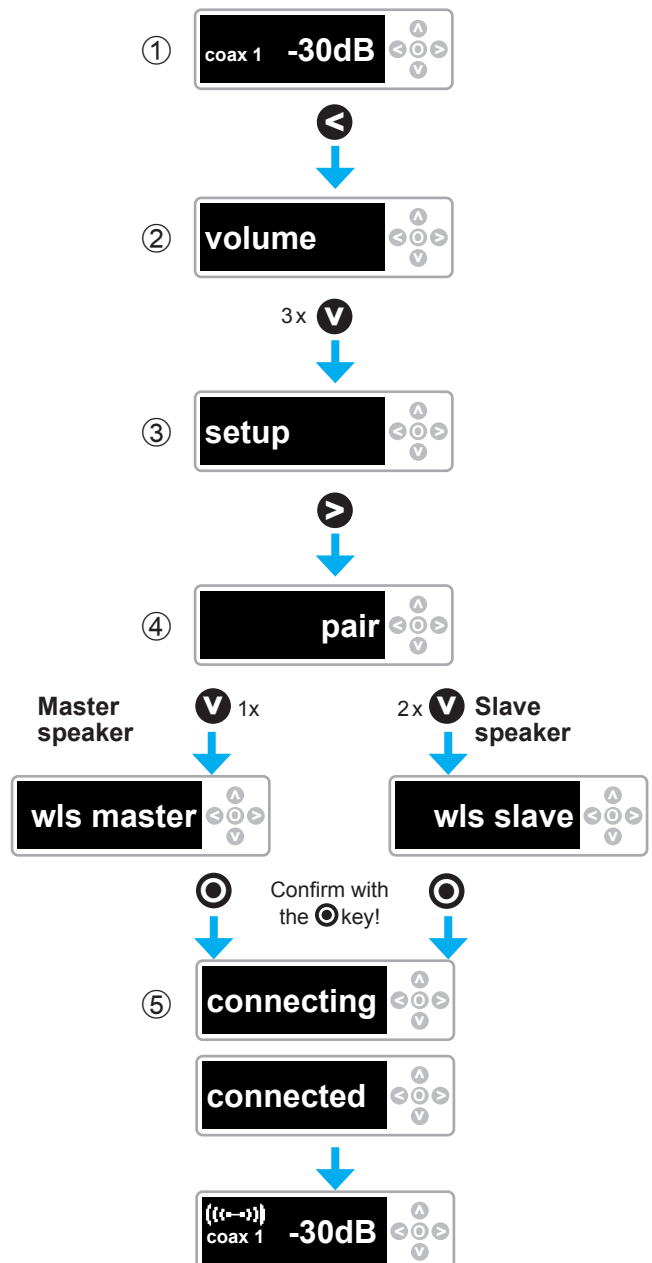
① After turning on the nuPro speaker, the display will show you the set **volume** and **input**. This is the the Volume sub-menu, press **<** to return to the main menu.

② Press **V** 3 times to get to the **setup** menu.

③ Press **>** to enter the **setup** menu; the display will now show **pair**.

④ Use the **V** key to select either:
 • **wls master** for your Master speaker
 • **wls slave** for your Slave speaker
 Confirm your selection with the **⊙** key in the middle of the control pad.

⑤ While establishing the connection to the other speaker, the display on each speaker will show **connecting**. Once the connection is established, the displays will briefly show **connected** and the **{{(--)}}** symbol will be shown permanently in the display of the Master speaker.



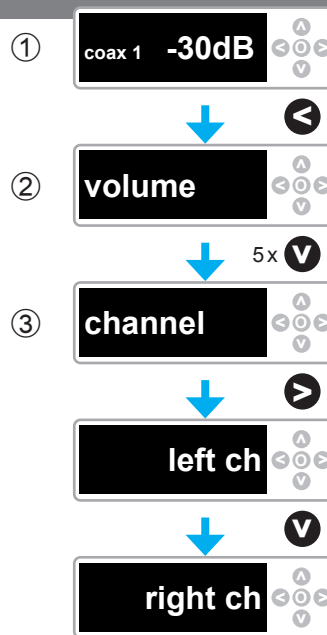
3 Channel selection

Finally, you may have to change the default channel settings. If the left speaker is your Master speaker, you can skip this step.

If your Master speaker is the right speaker you need to change the settings as follows:

- ① Press **⏪** to enter the main menu
- ② Navigate to the **channel** menu
- ③ Press **⏩** to enter the channel menu and the **V** key until **right ch** is shown in the display. You don't need to confirm the selection.

Your Master speaker will now play back the right channel. Your Slave speaker will be automatically configured to play back the left channel.



4 Source selection

You can now select your preferred source; the easiest way to do this is to use the remote control.

The remote control has 6 buttons for source selection. Pressing a key repeatedly toggles between its two sources as shown below:

- xlr** • XLR analog
• AES/EBU
- coax** • Coaxial 1
• Coaxial 2
- Bluetooth** • Bluetooth
- aux** • Aux
- opto** • Optical 1
• Optical 2
- usb** • USB
• Digital Port



5 Bluetooth

Each nuPro loudspeaker has 2 Bluetooth receivers.

The receiver marked with a headphone symbol is used for music playback.

The receiver without the headphone symbol is used for remote control purposes and can only be accessed via the Nubert X-Remote app.



- iOS devices will show the Audio-receiver only.
- Android devices will normally show both receivers. Examples:
Stock Android 8 Samsung Experience 9



Music playback from Bluetooth devices

In order to listen to music from your Bluetooth device, you need to pair your device with your nuPro X speaker. You only need to do this once.


On the speaker (see illustration right):

Navigate to the **bluetooth** menu and enter it by pressing . Begin pairing by pressing . The receiver is now visible to other Bluetooth devices.

On the transmitting device:

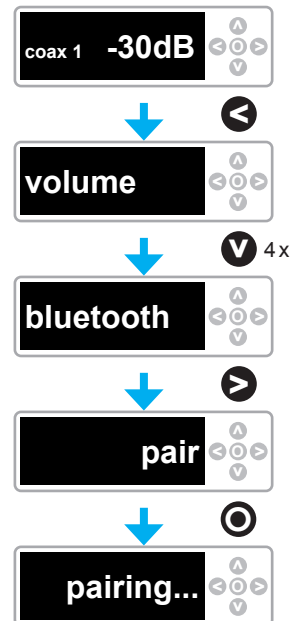
Go to the settings menu of your transmitter/smartphone and start the pairing procedure (check the owner's manual of your device). If you have an Android device, select the receiver marked with a headphone symbol (see above).

Source selection:

Select the Bluetooth input of the nuPro speakers, either on the speaker itself or with the remote control (see page 3). 

Note:

For the best possible audio quality, set the output level of your source device to maximum and perform all level adjustments on your nuPro speaker.



App Control: The Nubert X-Remote

Download and install the app from the Google Play Store or Apple App store. On Android devices, you must allow access to the device's location.

Always use the Nubert X-Remote app to connect to the master loudspeaker! Do not use the settings menu on your device!

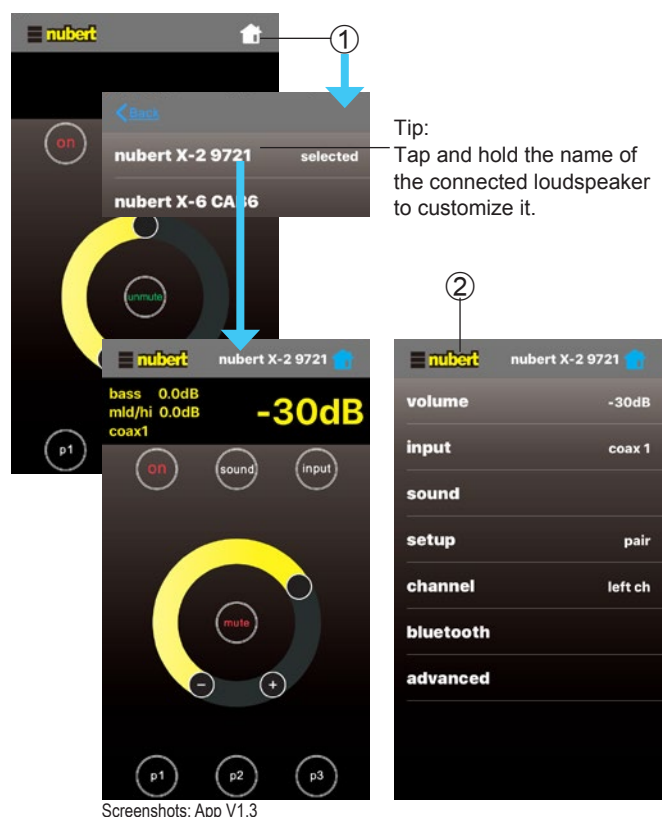
① After opening the app, you will be prompted to connect to a loudspeaker. Tap **connect** to go to the list of available speakers. Alternatively, you can tap the home-symbol in the top right corner of the screen to see available rooms or systems.

Tap on the speaker you wish to control. In the app, the connection is confirmed by showing **selected** next to the name of the chosen speaker. On the selected speaker itself, you will see a blinking Nubert logo.

Tap on the Nubert logo in the top left corner of the app to return to the main menu.

If you have selected the slave-speaker, an error message will appear – simply connect to the other speaker on the list following the steps above.

② Tapping the **Nubert logo** toggles between basic, daily operation of the speaker and access to the full functionality of the loudspeaker via the main menu. The latter menu is identical to that on the speaker itself.



Screenshots: App V1.3